

Newsletter

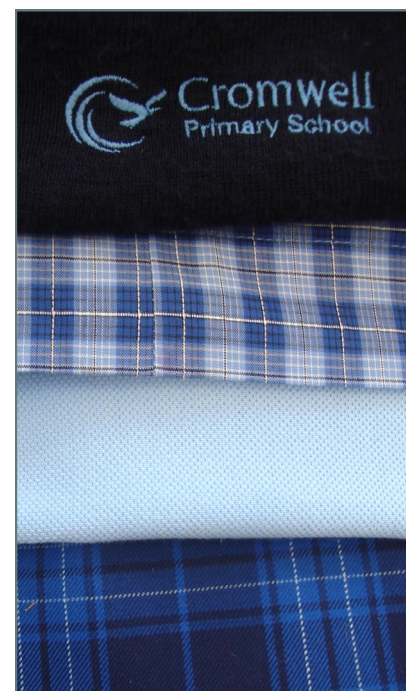
DEAR PARENTS AND CAREGIVERS

NGĀ MIHI NUI KI A KOUTOU KATOA. GREETINGS TO YOU ALL.

The carpark was a hive of industry on Monday morning as our large Year 5 group assembled prior to their departure for Camp Columba at Pukerau near Gore. We have been receiving updates every day about the awesome time they are having. At the Camp Meeting for parents held last week, Louise Haig said that she was thrilled by the amazing response from parents willing to be parent helpers for the week. This level of support was very much appreciated by the teaching team and we know this will make the difference at camp.

EOTC activities for our Hārewa Team continue this week and a bike ride for Kārearea Team tomorrow.

We would like to acknowledge the wonderful support we have received from many of our parents who have so willingly given up their time to transport children and support the myriad of activities that have been organised. The different programmes could not happen without your support. Thanks everyone involved with class activities and also to all the teachers who have put a great deal of work into planning such fun activities in the outdoors for the children. Next week our Year 6 children head to Dunedin for their action packed week. Well done everyone!!



INSIDE THIS ISSUE

2019 Community Survey Summary (Part 1)	2-3
Health & Safety.....	3-4
Enviro Group Trip	4
H1 & 2 EOTC Fundraiser ..	5
Awards	5
Congratulations	6
Administration	7
Community Notices.....	8
Term Planner.....	9

REMINDERS

- **Fri 13 Mar, K Team Lake Track Bike Ride**
- **Mon 16 to Fri 20 Mar, Year 6 Camp, Dunedin**
- **Thur 19 Mar, K1 & K2 St John First Aid Course**
- **Fri 20 Mar, K Hub & K5 St John First Aid Course**
- **Fri 20 Mar, Whole School Assembly, 11.40am, College Auditorium**
- **Mon 23 Mar—Otago Anniversary Day
SCHOOL CLOSED**

SCHOOL VALUES

Our school values are honesty, excellence, respect and contribution. They are an important part of our positive school culture and we notice children demonstrating them on a daily basis.

School Values in Action: Contribution

- Being an active learner in the classroom
- Showing commitment and initiative to take on roles in class, around school.
- Demonstrating pride by being a positive school role model
- Caring for the environment and working towards sustainability

2019 COMMUNITY SURVEY SUMMARY (PART 1)

In Term 4 2019, we gathered feedback from our parent community to help inform our new Strategic Plan for 2020-2023. We appreciated the time parents took to complete the online survey, attend the DVD screening of “Most Likely to Succeed” or supported the United Nations 17 Sustainable Development Goals Student Panel Evening. Feedback has been collated from this consultation process and the following summary highlights the most common themes:

What are Cromwell Primary School's strengths? ...(the things you want to see us continue to focus on)

- Growth mindset
- Teachers - dedication, professionalism, strong teaching base, experienced, choice of teachers, plan hands-on learning, focussed on student well-being, quality science, Te Reo, EOTC
- Community collaboration, involvement, community focus, sense of community
- Modern teaching practices and pedagogy - play based learning, inquiry approach, Visible Learning, project based, Ako philosophy. Practical, fun, hands on collaborative, 6Cs
- Focus not only on academic achievement but on teaching dispositions such as being kind, resilient, independent, self-confident & not afraid of making mistakes
- School culture - caring, inclusive, family oriented, safe & friendly, culture supports ALL students (those doing well academically and those struggling with learning, desire for all students to experience success, students have pride in their school, positive & friendly culture, open, positive relationships, feels like a safe place where adverse relationships are avoided if possible or dealt with fairly

What are the areas of concern or development you would like to see happen at Cromwell Primary School?...(things you would like to see introduced or changed)

- More playground facilities & development
- Class sizes, smaller classes
- Provision of a school library, school hall
- Roll growth and impact on class sizes, facilities and ability to achieve school goals as a result of the pressure
- Infrastructure - toilet blocks, provision of adequate toileting, staff toilets, special

needs bathroom, flooding issues in front of both blocks, provision of shade.
Continual integrated investment in school buildings and not add ons.

What are the most important skills, knowledge, attitudes and dispositions you would like to see Cromwell Primary School students equipped with?

- Respect
- Kindness, compassion
- Being well-rounded, successful learner/cope with failure, knows mistakes are part of learning
- Resilience
- Good Character
- Problem solving

What role do you think Cromwell Primary School should play in the Cromwell Community and do you think we need to make this a focus?

- School should continue to support the community through natural connection opportunities and the community continue to support the school e.g lake projects, experts supporting learning, volunteers, diversity, industry
- What is done is enough and appropriate, school has made a fair commitment and school support is always available when needed
- Continue making connections through the Kāhui Ako - ECE through to secondary.
- Don't think it needs to be a big focus - our school first

HEALTH & SAFETY NEWS

Coronavirus Update

- At this time the vast majority of people in New Zealand have no risk of exposure to the virus that causes COVID-19
- Children and young people under 18 account for only 2.4% of all reported cases of COVID-19 – this means we are unlikely to see widespread cases in schools and early learning service
- New Zealand currently has very few cases of COVID-19 and no evidence of sustained person-to-person transmission in our communities
- Although asymptomatic infection (people with no symptoms) has been reported, there is emerging evidence that this is rare and not a major driver in spreading the infection.
- Spread happens through coughing and sneezing by someone confirmed with COVID-19 – similar to the way that influenza spreads

“COVID-19 does not transmit as efficiently as influenza, from the data we have so far. With influenza, people who are infected but not yet sick are major drivers of transmission which does not appear to be the case for COVID-19” Director General of World Health Organisation (WHO)

Focus on prevention - the best preventative steps for any communicable disease

include simple but important measures to practice as part of your daily routine, but especially during flu season:

- wash your hands often with soap and water for at least 20 seconds and dry thoroughly
- avoid touching your eyes, nose, and mouth with unwashed hands
- avoid sharing anything that has come in contact with saliva, whether in your living or social environments
- stay home when you are sick and seek medical attention
- cover your cough or sneeze with a tissue, then throw the tissue in the rubbish
- get adequate sleep and eat well-balanced meals to ensure a healthy immune system.

Watch a [Child Friendly Coronavirus Explanation](#) video here

ENVIRO GROUP CHERRY TREE FARM TRIP

A small group of the Senior Enviro Group students had a fantastic trip to the Cherry Tree Farm on Tuesday where they were blown away by the magnificent vegetable and flower garden there. After popping in to see the Pantry that Ako students built last year they enjoyed the conversations with Sharon and Peter Brass about sustainability and the value of sharing locally grown food. Once again the school students were spoilt with the kindness of Sharon and Peter as they returned to school with armfuls of plants and vegetables including



chillis, beans, cucumbers, apples, as well as, two swan plants complete with Monarch caterpillars that will be looked after in K5. Sharon even whipped up a bouquet of flowers to present to Esme to acknowledge all she does for the school garden club. They will be planting the kale plants to grow over the winter and keeping a close eye on the tray of spinach seeds that they watched being mechanically planted. Peter and Sharon are fantastic ambassadors of sustainability with their spray free, environmentally friendly community focused garden. Thank you to Central Otago Motor Group and Cromwell Lions for the use of the community van. A big thank you goes out to First National and Mr Dave for all their support with getting the new school garden up and going. The garden club members enjoyed eating corn on the cob for lunch last week. Friday 27th March will be the last community vegetable stall for this season as autumn is here.

NEW ARRIVALS - WELCOME

We welcomed **Phoebe L** to school recently. We hope you enjoy your time with us at Cromwell Primary.



H1&2 EOTC FUNDRAISING

\$1

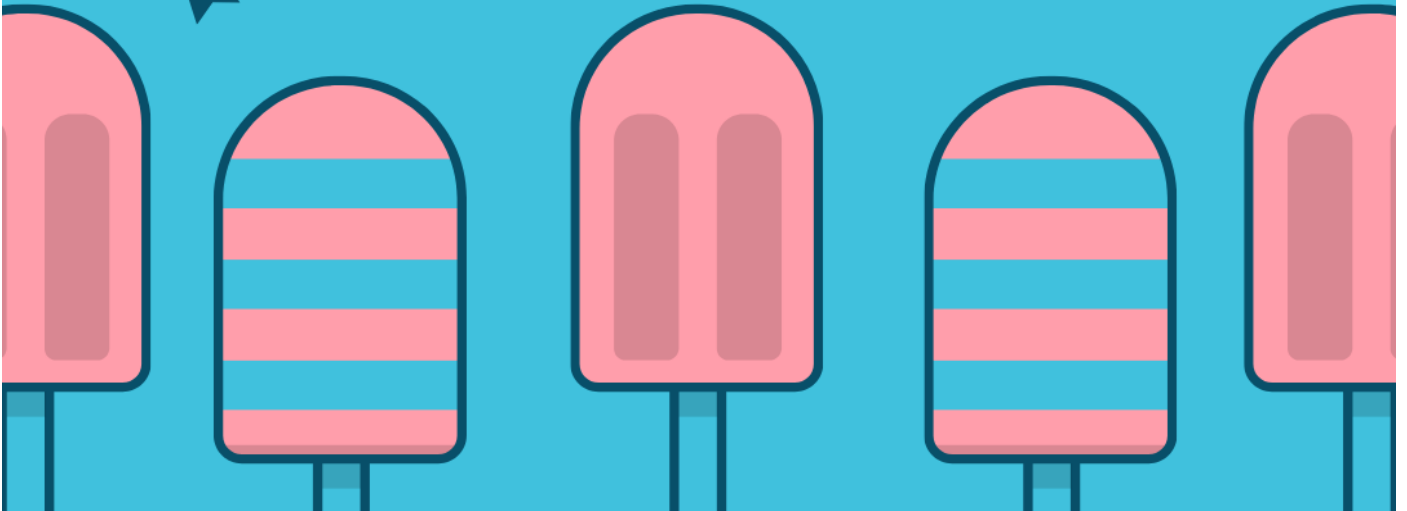
ICE BLOCKS FOR SALE

\$1

**FRIDAY 13TH MARCH
FRIDAY 20TH MARCH**



WE WILL BE COLLECTING MONEY FOR ICE BLOCKS
OUTSIDE THE HĀREWA HUB ON BOTH MORNINGS
AND DELIVERING ICE BLOCKS TO THE
CLASSROOMS BEFORE LUNCH



PRINCIPAL'S AWARDS – 6 MARCH ASSEMBLY

Well done to: Ethan E (K5), Amelia B, Emily K, Lucy H, Jacob C, Ella G, Ryan A, Sam S, Peyton E, Tilli P, Henry W, Eva T, Sophie M, Morgan C, Bryan R, James M, Trent H, Cooper W, Nathan A, Noah N, Zoë O, Heloisa PB, Jessi C, Delta B, Taylor T, Cole B, Kalea N, Callan M, Cooper P

Community pantry finds new home

By Leigh-Anne Fox

The global goal of zero hunger inspired two Cromwell primary school students to create a community pantry, or pataka kai, with the idea of food being available for everyone and anyone as they need it.

Seth O'Neill and Cruz Nicholson got to work creating, and before long, they had a community pantry available to help out those in need.

No money required, no donation or koha, just food that others leave as they are able. The problem was, they had nowhere to place the pantry.

That was last year, and this is now, and with a warm spirit, Cromwell Community House jumped onboard, contacted the school, and now have the community pantry between the Plunket rooms and Sushi Katsu.

"We are thrilled to see the pantry now in a permanent place where the community can easily access what they need," says Cromwell Community House manager Sue Woodward.

"This has been a wonderful initiative from both Seth and Cruz, a brilliant idea, and one the community can certainly make work."

It's now up to the community to help make the pantry work and fill the shelves.

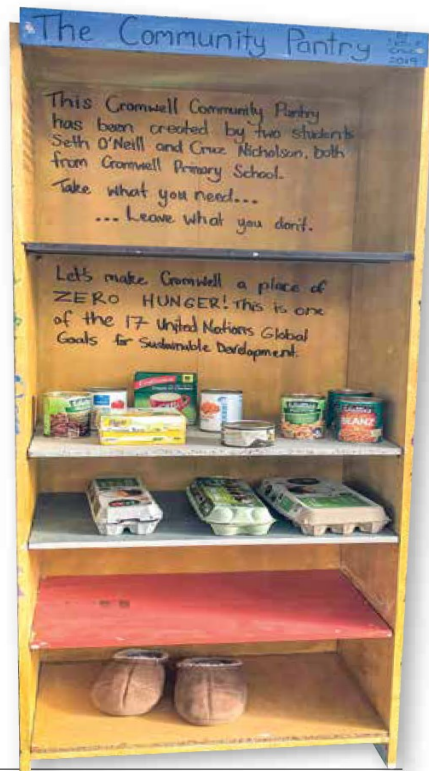
If you have spare kai, bring it along and place it on a shelf.

If you have a surplus of produce, whether it's flowers, fruit, or vegetables, get it along to the community pantry.

"The pantry is for everyone's use, if you need something, have it," Sue adds.

"The idea has been created with our community in mind, a way to help others, and Cromwell Community House is very proud to be able to follow through and support the boys' idea while helping those who require an extra hand at times."

A big thank you goes out to school caretaker Dave who installed the pantry for the community to use and enjoy.



CROMWELL SWIM SQUAD

Recently, Ako Student, Georgia Spillane was one of six Cromwell Swim Squad girls who headed to Invercargill to compete in the South Island Country and Town Championships held at Splash Palace in Invercargill. Not only were they swimming for Cromwell, but were also representing with 25 other swimmers, OTAGO.

Georgia was chosen to represent Otago in the regional relays and she also maintained a 100% personal best rate throughout the meeting, as well as placing first in 8 of her ten races - A very big well done to you Georgia, your hard work and commitment is paying off. You deserve to be very proud of this achievement.

KAHIKATEA PLAYGROUND VALUES AWARDS

Morgan C, India B, Keanu N, Harmony R, Hadley P, Kydan O, Paige M, Isabelle C, Noah S, Braxton E (K3), Summer L, Kahlee R, Morgan C (K5), Isabella C, Nixon W, Neeka P, Ava S, Dylan P (K1), Charlotte T, Riley W, Meya B, Archie K, Ella G, Qyn E, Macey E, Peyton E (Hārewa Team). Thank you for making a difference in our playground.

"The capacity to learn is a gift; the ability to learn is a skill; the willingness to learn is a choice"

Anonymous



"Iti karearea kahikatea ka taea"

*The smallest falcon can reach the top
of the tallest tree"*

FINANCES

- School Costs will be billed to your child's account. A statement will be sent out monthly that shows the items billed and payments made.
- Please pay by internet banking (03-1735-0004162-000). Please put name and what it relates to as the reference and/or e-mail Tegan to advise. If you are unable to pay by internet banking, payment can be made by cash or cheque. Please place cash/cheque in a named envelope and specify what the payment is for on the envelope. The envelope can be given to the classroom teacher to come to the office in the purple bag. If dropping the envelope to the office, please put envelope in the post-it slot. **We do not have eftpos.**
- **We have limited cash, so please endeavour to pay the exact amount of cash.**
- **You can pay regular amounts to cover costs e.g \$5 per week if NE-Y2, \$10 per week if Y3&4, \$15 Y5&6.**

Should you require assistance to meet school costs, please contact the principal or Tegan in the office as there is assistance that is available.

UNIFORM

New Uniform can be purchased from Tanya at Metro-grafix. Tanya is in the Metrografix office from 9am until 2:45 daily. If uniform is needed outside this time please call and arrange a time that suits.

E-mail: tanya.metrografix@xtra.co.nz, telephone 03 4454533, cell: 027 6213582.

- House T-shirts are available for \$20
- Highlighter Vests can be purchased for \$10 each
- Boys School Socks, lovely quality nice dark navy - available in twin packs \$9.00 per pack (so \$4.50 a pair).
- School hats with the house colours (\$16) - pre-ordering available now

Second-Hand can be purchased on-line on the "Cromwell Primary School Second-Hand Uniform Buy/Sell Page.

[Second-Hand Uniform Link](#)

SCHOOL

LUNCHES...

Heat Ups

There will be no heat ups in Terms 1 & 4 this year Mondays, Wednesdays and Fridays in Terms 2 & 3.

Subway Tuesday:

1. You can order and pay online.

Go to www.subwayexpress.co.nz (you will need to register if you haven't already) and click on the School lunch option. Choose Cromwell Primary School from the drop down list. Choose your sub and then work down the list to select or deselect cheese, salads etc. On the last page is a box where you can make additional notes (eg..no sauce). The subs ALL come with sauce by default. You will have to do a separate order and payment per child. At this stage you can't order school lunches via the app.

2. You can order through the school

A special envelope is available with all the options to tick. If you think this is going to suit you best, please come into the office and pick up a few envelopes.

Sushi Thursday:

Use the purple bag service before 9. Envelope to include \$5 for 6 pieces or \$6 for 8 pieces, name, room, flavour (vegetarian, tuna, chicken, salmon). Soy, ginger or wasabi will only come if you request it.

NEW Organic Lunch Box (\$7 incl sushi (choice of Salmon Teriyaki Chicken or Tuna Mayo) plus Japanese omelette & seasonal vegetables

PLEASE ENSURE YOU HAVE THE EXACT CHANGE!

COMMUNITY NOTICES

Cromwell Junior Netball Club Years 1-6

Registrations are now open for Cromwell Junior Netball if you have a year 1 to 6 child who would like to play please follow the link below and complete the form:

<https://www.sporty.co.nz/viewform/115001>

All forms must be in by Friday 13th March 2020

The year 1 & 2 (Junior Development Programme) will have one practice a week after school and the years 3 & 4 and 5 & 6 teams will have one practice a week and will also play a game every Saturday in Alexandra.

Practice for the 2020 season will be held on Thursdays

We will be holding a fun day in March so that the players can have a run around and we can get an idea on team placements. This will be for year 5 & 6 players only. Date to be confirmed

If you have any questions then please email: cromwell.junior.netball.club@gmail.com

Players must be registered to be able to play so don't miss out!



KELLY SPORTS HOLIDAY PROGRAMME

CONTACT
SHARELLE POTTER

SHARELLE@KELLYSPORTS.CO.NZ
027 370 6307

BOOK ONLINE AT
KELLYSPORTS.CO.NZ



ROZZIE AND THE ORCHESTRA

TURN UP THE MUSIC

THREE SHOWS! MAGICAL & INTERACTIVE

SUNDAY 22ND MARCH
1PM, 2PM & 3PM
Tickets are \$10 per family and can be purchased on eventfinder

Join Rozzie and her Orchestra in the most magical, highly interactive, fun and educational concert your preschool and junior school tamariki will ever get to be part of. Rozzie and the Orchestra, is written, conducted and choreographed by the talented Rozzie Marowitz and will inspire and engage kids into enjoying and connecting into the beautiful world of music. Brought to you by the Turn Up The Music Trust.

These concerts will be sold out so get your ticket now!

ARROWTOWN ATHLETIC HALL
tickets online at www.eventfinder.co.nz

www.turnupthemusic.co.nz | info@turnupthemusic.co.nz



GREAT FUN FOR THE WHOLE FAMILY!

31 OCT 2018 5.30PM - 7.30PM
PRESBYTERIAN CHURCH
10 ELSPETH STREET

FREE ENTRANCE
Games & Crafts
BBQ & Treats
Bouncy Castle
Toddler Playground
Coffee & Tea for adults

ALL CHILDREN NEED ADULT CARE / SUPERVISION

presented by
CROMWELL COMBINED CHURCHES

For more information:
027-446-30378 / www.cromwellchurches.co.nz



playball Sport for Life

Presenting Dunedin's most EXCITING Easter Holiday Programme at Cromwell College!

Week 1: Tuesday 14th - Friday 17th April
Week 2: Monday 20th - Friday 24th April

We bring you a holiday programme with a DIFFERENCE. Playball is Dunedin's PREMIERE sport and movement programme for preschool & primary school children, teaching them 8 different sports through structured games.

Using our signature EXPERTISE and STRUCTURE we present a programme which involves Athletics, Netball, Dodge ball, Touch Rugby, Hockey, T-Ball, Cricket, Basketball and Soccer.

Our Trip days include: Site Trampoline, Cromwell Swim Centre, Mini Golf & Puzzling World

Highlights include: Star Wars Day, Easter Egg Hunt, Soccer Skills Workshop & Lots more!!!

Don't miss out! Book today at
Playballdunedin.aimplus.com

Playball Dunedin Price List

Full Week (8am-6pm)	\$205
School Week (8am-4pm)	\$185
Full day	\$40
Full Trip day	\$55
School day	\$35
School Trip day	\$45
Half day from 8am to 1pm or 1pm to 6pm	from \$30

(Half day option not available on trip days)
ALL PRICES ARE EXCLUSIVE OF GST

WINZ Subsidies available



Messy Easter

29 March 2020 5 - 7 pm
Cromwell Presbyterian Church

Includes a meal

Messy Church
What is it?
Messy Church is a relaxed style of church which invites families and people of all ages to learn, play, celebrate and eat together.

Church... but not as you know it

DONATIONS // KOHA WELCOME

PLEASE BOOK AT: messychurch4cromwell@gmail.com (BEFORE 22 MARCH 2020)

BOOKINGS NOW OPEN

CROMWELL KIDS FUN CLUB

Holiday Programme
14th April to 24th April

Cromwell Kids Fun Club is a not for profit organisation run by a small committee and an administrator. The holiday programme is staffed by our programme staff at Cromwell Primary.

\$30 Half day (9am - 1pm)
\$45 Short day (8am - 3:30pm)
\$55 Long day (8am - 6pm)
(fees are inclusive of outings)

20% sibling discount of 2nd, 3rd child

WINZ subsidies available

Check out our holiday programme on our Facebook page

Book your child's spot here
cromwellkidsfunclub.aimplus.com

Any other queries please contact:
cromwellkidsfunclub@gmail.com

JUNIOR SQUASH

4 WEEK PROGRAMME 8 - 12 YEARS

DATE: Monday 16 March - 6 April

TIME: 3.30 - 4.30

COST: \$20.00

12 SPACES ONLY, FIRST IN FIRST SERVED

CONTACT: Kylie Murdoch 021 334 809



future FERNS FUN DAY

Sunday 29th March 2020, 9.45am-12.30pm
Molyneux Netball Courts - for ages 5-12

Lots of fun games
Lots of fun challenges
Just lots of FUN!

Please register online at
www.sporty.co.nz/centralotagonetball
For further information contact
conetball@gmail.com
or phone Sally on (021) 1685688

**CROMWELL PRIMARY SCHOOL
TERM 1 2020 SCHOOL CALENDAR**

Updated 11 March 2020

WEEK	MONDAY	TUESDAY	WEDNESDAY	THURSDAY	FRIDAY	SAT/SUN
1	3 February	4	5	6	7	8/9 Feb
3 February - 7 February	Term 1 Commences			Waitangi Day School Closed		
2	10	11	12	13	14	15/16 Feb
10 February - 14 February		Welcome Whakatau 10:40am Steel Netball Visit – 9am Meet the Teacher 6:30-7:10pm 7:15-8:00pm			Kārearea Bike Safety Checks	
3	17	18	19	20	21	22/23 Feb
17 February - 21 February		Life Education	Life Education	Life Education Football South Yr 5 & 6 girls, Alexandra	Life Education Garry Milford Bike Skills K1, K2 & K5 Whole School Assembly (K2)	
4	24	25	26	27	28	29 Feb/1 Mar
24 February - 28 February	Life Education Garry Milford Bike Skills – K Hub	Life Education	Life Education	El Gregorio, Memorial Hall, 1.40pm	Senior Athletic Sports Year 3-6	
5	2 March	3	4	5	6	7/8 March
2 March – 6 March	PP Date Senior Athletics – Year 3-6 SOK's AGM, 7pm				Whole School Assembly	
6	9	10	11	12	13	14/15 March
9 March - 13 March	Year 5 Camp Columba	Year 5 Camp Columba Enviro Group Cherry Tree Visit	Year 5 Camp Columba	Year 5 Camp Columba	Year 5 Camp Columba Lake Track Bike Ride – Kārearea Team	
7	16	17	18	19	20	21/22 March
16 March - 20 March	Year 6 Camp Dunedin	Year 6 Camp Dunedin	Year 6 Camp Dunedin	Year 6 Camp Dunedin K1 & K2 – St John First Aid Course	Year 6 Camp Dunedin K3, K4 & K5 – St John First Aid Course Whole School Assembly	
8	23	24	25	26	27	28/29 March
23 March - 27 March	Otago Anniversary Day School Closed	EOTC H1 & H2 – Garry Milford Bike	H1 & H2 EOTC Dunstan Zone Athletics, Alexandra	H1 & H2 Big Bike About	H1 & H2 Clip'n'Climb Sausage Sizzle Kārearea Team	
9	30	31	1	2	3	4/5 April
30 March – 3 April Goal Setting Meetings			CO Athletics, Alexandra	K4 & K5 Kayaking, Cromwell Pool	K1, K2 & K3 Kayaking, Cromwell Pool Sausage Sizzle -AKO Whole School Assembly	
10	6	7	8	9	10	11/12 April
6 April -9 April			Kārearea Team Walking Tracks	Final Day Term One	Good Friday	